

08 VOYAGE



**SMARTSPACE™**
WEB

A VOYAGE TO REMEMBER.

The 2008 Winnebago Voyage® lets you travel by your own rules. Five models with multiple slideouts and a variety of features let you create the perfect motor home for your adventures. The new 32H even has an incredibly spacious full-wall slide over 23-feet long loaded with innovative, user-friendly features. It's all part of the SmartSpace™ design philosophy that makes the most of the

available space. A 7'2.5" ceiling offers plenty of headroom and you can choose from three fabric combinations, available UltraLeather™ upgrades and two woods to create your perfect interior. Select the standard exterior graphics package or spice things up with available full-body paint. The Voyage lets you create the perfect motor home for you.

MAKE IT YOUR OWN

Choose a floorplan that fits your family, then load it with entertainment options. The U-shaped dinette and the sofa/bed on the 32H are available in UltraLeather. This innovative fabric is softer than leather, looks just as great and cleans easily.

The Voyage comes with a standard 27" TV (32" TV on 38J) and an available Home Theater Sound System with DVD player, five speakers and a subwoofer. Add the King-Dome® satellite dish to expand your viewing options. An available 600-watt inverter provides power for the entertainment features without a generator or shoreline source.

The galley offers numerous amenities, including Corian® solid-surface counter-tops. Meal preparation is quick and easy using the Amana® three-burner range and Sharp® microwave oven. Select the available microwave/convection oven for specialty baking and browning.

You'll sleep soundly in a spacious, comfortable bedroom with a walk-around queen-size bed. A king-size bed is even offered in the 35L. Every model provides abundant storage throughout and most offer an available washer/dryer.

WEB Select a Key Feature

The **WEB** icon designates a Winnebago Industries Key Feature. For further in-depth information and photos, use the Drop-down Menu or click on the 'Key Features' page at winnebagoind.com.



WEB **titaniumTOUCH™** The refrigerator features Titanium Touch™ stainless finish doors, a Winnebago Industries exclusive, which has the look of stainless steel, resists fingerprints and is warmer to the touch than traditional stainless steel. As an added benefit, you can even use your favorite kitchen magnets.



WEB **BenchMark®** The U-shaped dinette table in the 32H sits atop a single pedestal for more legroom. Both the U-shaped dinette and the BenchMark dinette (NA 38J) include a child safety-seat tether and convert into a comfortable bed.



FULL-EXTENSION DRAWER SLIDES Drawers are sized to maximize storage, hold tight with positive latches and open fully for easy access to stored items.



LIVING ROOM The abundant cabinetry comes in a sleek catalyzed finish typically reserved for upscale homes.



WEB **RestEasy®** This multi-position lounge changes from a sofa to a recliner with ottoman to a comfortable bed, all at the touch of a button.



WEB **TRUEAIR™** This residential central air conditioning system cools 40 percent faster and runs 10 percent quieter than roof airs. The key is a Coleman®-Mach® cooling unit located in the basement for a lower vehicle profile, easier service and more efficient operation.



EURO CHAIR Relax in the available stylish UltraLeather recliner with ottoman (NA 32H).

PICK YOUR PREFERENCE

We thought of all the details to make driving your Voyage more comfortable and enjoyable. An ergonomically designed dash places switches and controls within easy reach, and the available rearview monitor assists you when backing and maneuvering. The available side-mounted video cameras activate with the turn signals for added peace of mind when maneuvering.

Enjoy endless tunes from the radio, CDs or your iPod/MP3 player on the RV Radio®. Check the weather band for instant weather updates. Steering wheel and handheld remotes give you control of the stereo while driving or relaxing in the living area. Upgrade to Sirius® Satellite radio for over 130 crystal-clear digital channels anywhere in the U.S. This package includes a complimentary six-month subscription.

WEB **SIRIUS** **RV•RADIO**



DASH The RV Radio with the Sirius Satellite package is iPod ready so you can listen to and charge your iPod while you drive. A dash workstation gives the passenger a place to set a laptop computer.



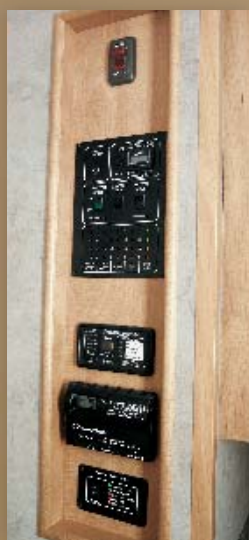
DRIVER'S SEAT The driver's seat is available in UltraLeather and with a six-way power assist pedestal for the ultimate in driving comfort.



WEB **STOREMORE** This exclusive storage system allows exterior compartments to extend with the slideroom for easy access to stored gear (NA 32H).



WEB **TRUELEVEL** Eliminate tank-level guesswork with our exclusive TrueLevel™ holding tank monitoring system. It incorporates detector cells that determine liquid levels from outside the tank. No probes means no more corrosion, just accurate readings time after time.



WEB **POWERLINE**
ONEPLACE
This energy management system monitors 110-volt electrical usage and automatically cycles appliances on and off to prevent power overloads. It's part of the OnePlace systems center that places switches and gauges in one convenient location.



EXTERIOR SERVICE CENTER Large, color-coded labels make hookups a snap. The QuickPort® service connection hatch allows the bay doors to close when hookups are connected.



STORAGE Pass-through storage on the 32H lets you bring your larger gear.

08 VOYAGE FLOORPLANS



Carpet

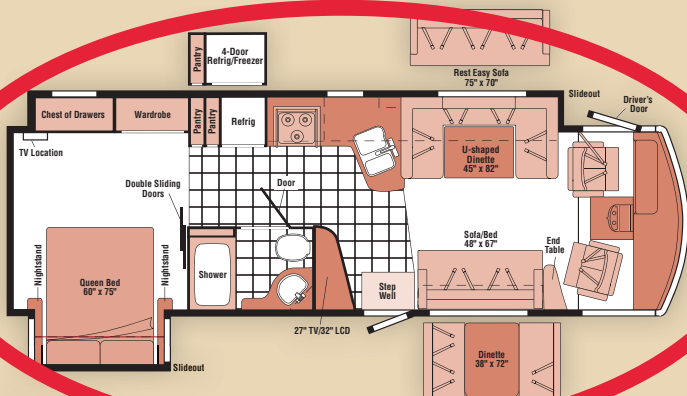


Vinyl Tile
Floorcovering

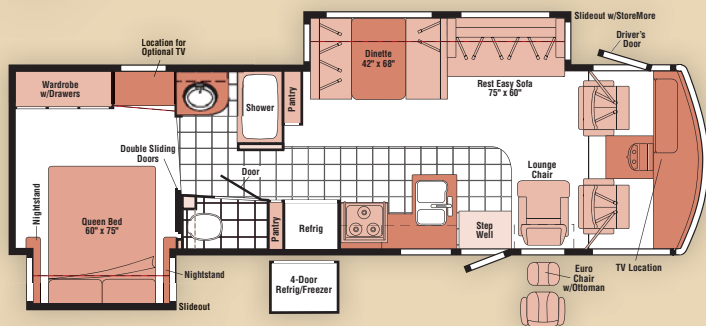


Seat
Belts

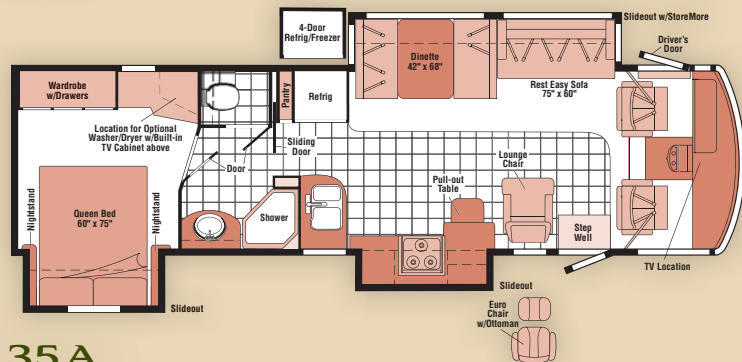
Note: Dimensions shown are for sleeping space only and may vary due to styling differences. Dashed lines denote overhead storage areas.



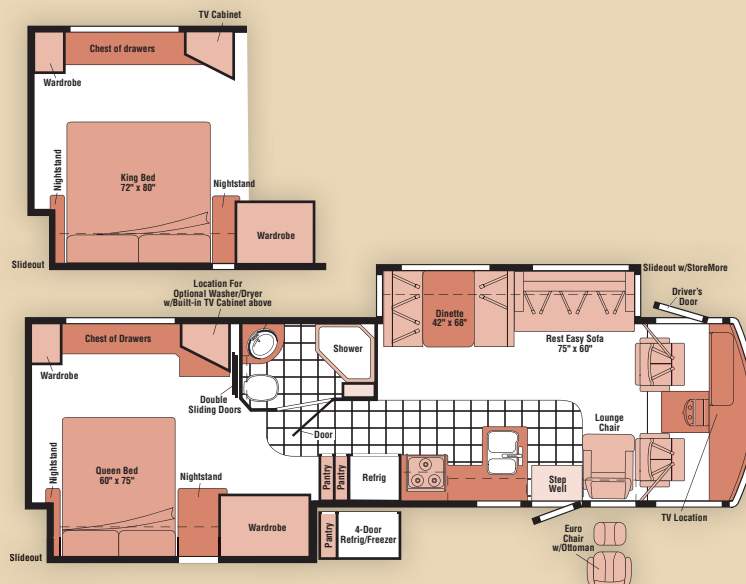
32H
NEW



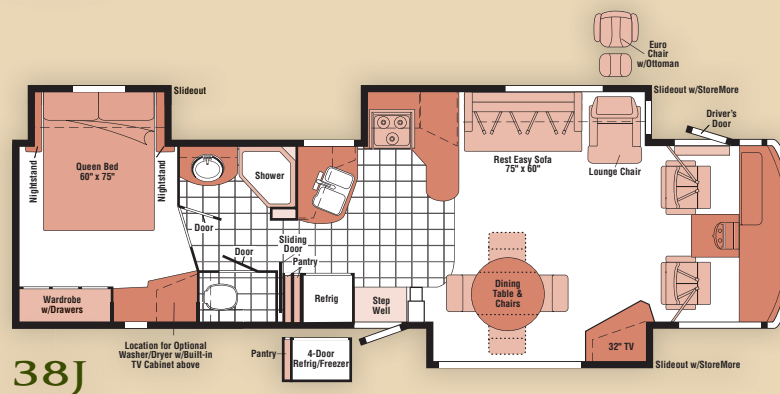
33V



35A



35L



38J

08 VOYAGE SPECIFICATIONS

WEIGHTS & MEASURES	32H NEW	33V	35A	35L	38J
Length	32'10"	33'7"	35'10"	35'11"	38'9"
Exterior Height ¹	12'3"	12'3"	12'3"	12'3"	12'3"
Exterior Width ²	8'5.5"	8'5.5"	8'5.5"	8'5.5"	8'5.5"
Exterior Storage ^{3,6} (cu. ft.)	71.4	59.9	89.9	81.7	88.6
Awning Length	16'	18'	20'	15'	19'
Interior Height	7'2.5"	7'2.5"	7'2.5"	7'2.5"	7'2.5"
Interior Width	8'0.5"	8'0.5"	8'0.5"	8'0.5"	8'0.5"
Freshwater Capacity w/Heater ⁴ (gal.)	78	90	84	90	84
Holding Tank Capacity - Black/Gray ⁴ (gal.)	39/48	55/43	50/75	65/49	51/53
LP Capacity ⁵ (gal.)	23	28	28	28	28
Fuel Capacity (gal.)	75	75	75	75	75
GCWR ⁷ (lbs.)	26,000 A / 26,000 C	26,000 A / 26,000 C	26,000 B / 26,000 D / 30,000 E	26,000 B / 26,000 D / 30,000 E	30,000 E
GVWR (lbs.)	20,500 A / 21,200 C	20,500 A / 21,200 C	22,000 B / 22,000 D / 24,000 E	22,000 B / 22,000 D / 24,000 E	24,000 E
GAWR - Front (lbs.)	7,500 A / 8,000 C	7,500 A / 8,000 C	7,500 B / 8,500 D / 9,000 E	7,500 B / 8,500 D / 9,000 E	9,000 E
GAWR - Rear (lbs.)	13,500 A / 13,500 C	13,500 A / 13,500 C	14,500 B / 15,000 D / 15,500 E	14,500 B / 15,000 D / 15,500 E	15,500 E
Wheelbase	220"	208"	228"	228"	248"

AUTOMOTIVE/CHASSIS	32H	33V	35A	35L	38J
A Ford® Chassis – 6.8L SOHC Triton® V10 362-hp, TorqShift™ 5-speed overdrive transmission, 4-wheel ABS, 130-amp. alternator, Tires 19.5," Wheel Liners	S	S			
B Ford Chassis – 6.8L SOHC Triton V10 362-hp, TorqShift 5-speed overdrive transmission, 4-wheel ABS, 130-amp. alternator, Tires 22.5," Wheels stylized aluminum			S	S	
C Workhorse™ Chassis – 8.1L Vortec V8 340-hp, Allison® 1000 MH 6-speed overdrive transmission, 4-wheel ABS, 145-amp. alternator, Steering Wheel custom, Tires 19.5," Wheels stylized aluminum	O	O			
D Workhorse Chassis – 8.1L Vortec V8 340-hp, Allison 1000 MH 6-speed overdrive transmission, 4-wheel ABS, 145-amp. alternator, Steering Wheel custom, Tires 22.5," Wheels stylized aluminum			O	O	
E Workhorse Chassis – 8.1L Vortec V8 340-hp, Allison 2100 MH 6-speed overdrive transmission, 4-wheel ABS, 145-amp. alternator, Steering Wheel custom, Tires 22.5," Wheels stylized aluminum			O	O	S
Trailer Hitch ⁷ 5,000-lb. drawbar/500 lbs. maximum vertical tongue weight, fixed mount female socket, 7-pin connector	S	S	S	S	S
Leveling Jacks (Front & Rear) hydraulic, manual touch pad, indicator light	S	S	S	S	
Leveling Jacks (Front & Rear) hydraulic, automatic	O	O	O	O	S

CAB AREA & DRIVER CONVENIENCES	32H	33V	35A	35L	38J
Cab Seats lumbar support, armrests, multi-adjustable swivel/slide/recline, fabric, Cab Sound Control Package, Cruise Control, Door (Driver) entry, assist bar, courtesy light, TriMark® KeyOne™ System, Map Lights, Powerpoint 12-Volt DC/Cigarette Lighter, Steering Wheel tilt w/power-assist, Sunvisors, Trim Panels driver & passenger, Window (Driver & Passenger) full-slider w/screen, Windshield Wipers intermittent, Workstation in-dash, passenger	S	S	S	S	S
Cab Seats UltraLeather™, Cab Seat Pedestal 6-way/power-assist (driver), Defroster Fans auxiliary, Monitor System rearview, black & white w/single camera & 1-way audio, Audiovox®, Video Camera System side-mounted cameras, turn-signal activated	O	O	O	O	O
Cab Seat w/footrest (NA w/optional dinette)	O				

GRAND PACKAGE	32H	33V	35A	35L	38J
Cab Seats UltraLeather, Cab Seat Pedestal 6-way/power-assist (driver), Entertainment Center (Exterior) DC receptacle, AC duplex receptacle, AM/FM radio w/CD player & remote, radio antenna, speakers (2), lockable compartment, removable table, Home Theater Sound System amplifier, DVD player, receiver, speakers (5), subwoofer, Memorex®, Leveling Jacks (Front & Rear) hydraulic, automatic (NA 38J), Microwave/Convection Oven w/range fan, stainless steel, Monitor System rearview, black & white w/single camera & 1-way audio, Audiovox, Power Cord 50-amp., Roof Vent powered ventilator fan, galley, TV 20" color AC stereo w/remote, flat-face, bedroom (NA 32H), Water Heater 10-gallon electronic ignition, 120 VAC/LP gas w/motoraid, Windows dual-glazed/thermo-insulated	O	O	O	O	O

ENTERTAINMENT	32H	33V	35A	35L	38J
C.B. Wire Prep 12-volt DC powerpoint, RV Radio® (Cab) AM/FM stereo/CD player w/remote controls & weather band, iPod/MP3 input, Radio Power Switch main/auxiliary battery, Satellite System Ready, Telephone input & interior jack, TV Enhancement Package antenna (amplified), 12-volt DC powerpoint, interior jacks, coax wiring, cable input, exterior antenna jack, TV shelf in bedroom (NA 32H), Video Selection System	S	S	S	S	S
DVD player w/remote	O	O	O	O	O
Entertainment Center (Exterior) DC receptacle, AC duplex receptacle, AM/FM radio w/CD player & remote, radio antenna, speakers (2), lockable compartment, removable table, Home Theater Sound System amplifier, DVD player, receiver, speakers (5), subwoofer, Memorex	O	O	O	O	O
Satellite Dish Antenna Winegard®, RV digital, elevation sensing unit, manual	O	O	O	O	O
Satellite Dish Antenna King-Dome®, RV digital, automatic	O	O	O	O	O
Satellite Radio Sirius® includes 6-month prepaid subscription, iPod interface, cable/connect	O	O	O	O	O
TV flat-face 20" color AC stereo w/remote, bedroom		O	O	O	O
TV LCD 20" color AC stereo w/remote, bedroom		S			
TV LCD 27" color AC, stereo w/remote		S	S	S	
TV Slimfit 27" color AC, stereo w/remote		S			
TV LCD 32" color AC, stereo w/remote	O				S

INTERIOR	32H	33V	35A	35L	38J
Ceiling fabric, Countertops solid-surface in galley, laminate in dinette, bath & bedroom, Curtain front wraparound, Light decorative, Lights ceiling, incandescent w/wall switches, Lights fluorescent lounge, galley w/wall switches, Lights reading, Shades day/night pleated (lounge & dinette), pleated (lounge slideout side windows & bedroom), mini blinds (galley)	S	S	S	S	S
Windows dual-glazed/thermo-insulated	0	0	0	0	0

FURNITURE	32H	33V	35A	35L	38J
BenchMark® Full Comfort Dinette (Fabric) w/access to storage below, child seat tether anchor		S	S	S	
U-Shaped Dinette (Fabric) w/access to storage below seats, child seat tether anchor	S				
U-Shaped Dinette (UltraLeather) w/access to storage below seats, child seat tether anchor	0				
BenchMark Full Comfort Dinette (Fabric) w/access to storage below, child seat tether anchor, requires ordering RestEasy® Multi-Position Lounge (Fabric) power recliner	0				
Dining Table w/chairs (2) freestanding & (2) folding					S
Lounge Chair (Fabric) hoop-base rocker/recliner, footrest	S	S	S	S	S
Lounge Chair (UltraLeather) hoop-base rocker/recliner, footrest	0	0	0	0	0
Euro Lounge Chair (UltraLeather) w/ottoman	0	0	0	0	0
Rest Easy Multi-Position Lounge (Fabric) power recliner	0	S	S	S	S
Rest Easy Multi-Position Lounge (UltraLeather) power recliner	0	0	0	0	0
Sofa Bed (Fabric) access to storage below, pillows (2)	S				
Sofa Bed (UltraLeather) access to storage below, pillows (2)	0				

GALLEY	32H	33V	35A	35L	38J
Faucet single-control, Microwave Oven w/vented range fan, Sharp®, Pantry(ies) , Range Top 3-burner w/storage below, Amana®, Range Covers , Refrigerator/Freezer large double-door, Titanium Touch™ stainless finish, Roof Vent nonpowered, Water Purification System separate galley faucet	S	S	S	S	S
Microwave/Convection Oven w/range fan, stainless steel	0	0	0	0	0
Range 3-burner w/large oven	0	0	0	0	0
Refrigerator/Freezer 2-door w/icemaker, Titanium Touch stainless finish	0	0	0	0	0
Refrigerator/Freezer 4-door w/icemaker, Titanium Touch stainless finish	0	0	0	0	0
Roof Vent powered ventilator fan	0	0	0	0	0

BATH	32H	33V	35A	35L	38J
Cabinet lavatory, Cabinet medicine, Faucet (Lavatory) dual-control, Faucet (Shower) dual-control w/flexible showerhead, Light shower, Lights makeup, Roof Vent powered, Shower Door textured glass	S	S	S	S	S

BEDROOM	32H	33V	35A	35L	38J
Bed queen, innerspring Serta® mattress, bed lift gas springs w/underbed storage, Bedspring pillows & shams	S	S	S	S	S
Bed king, innerspring				0	

EXTERIOR	32H	33V	35A	35L	38J
Awning patio, Awning Rails w/rain gutters, Door entrance, separate screen door w/shade, deadbolt lock, Entrance Steps electric w/doorjamb switch, Ladder , Light porch, Mirrors electric remote w/deffrost, Mudflaps rear, front, Receptacle AC duplex, Sidewall Skin 1-piece smooth fiberglass, Storage Compartments valance panels, trunk liner (NA 32H), gas struts, TriMark® KeyOne™ System, paddle latch, lights, antenna jack	S	S	S	S	S
Awning patio, electric w/wind sensor & remote	0	0	0	0	0

SYSTEMS	32H	33V	35A	35L	38J
HEATING & A/C – Air Conditioner TrueAir® residential central air conditioning system w/heat pump, Automotive Heater/Air Conditioner , PowerLine® Energy Management System	S	S	S	S	S
Furnace 35,000 BTU	S	S			
Furnace 40,000 BTU			S	S	S
ELECTRICAL – Auxiliary Start Circuit , Batteries (2) (Coach) deep-cycle w/disconnect system, Dual Battery charge control (automatic), Electrical Distribution System AC & DC breaker panels, 45-amp. converter/charger (55-amp. on 38J), Generator 5,500-watt, Cummins Onan® Marquis Gold™, gas, Generator Prep gas line, 12-volt DC wiring, Generator/Shoreline Automatic Changeover Switch , OnePlace® Systems Center wall-mounted, battery condition gauge, generator hourmeter gauge, generator start/stop switch, holding tank levels, LP tank level, water heater switch & lights, water pump switch, water tank level, Service Center (Electrical) cable input, portable satellite dish hookup, 30-amp. power cord, QuickPort® service connection hatch	S	S	S	S	S
Inverter DC/AC, 600-watt, Power Cord 50-amp., Solar Panel 10-watt w/battery charger	0	0	0	0	0
PLUMBING/LP – Drain 1" water tank, Service Center (Drainage/Water) city water hookup/tank diverter fill, drainage valves, exterior wash station w/pump switch, QuickPort service connection hatch, 10' sewer hose, Tank Flushing System black tank only, Tank holding, heated compartment, Tank LP, permanent mount w/gauge, TrueLevel™ Holding Tank Monitoring System , Water Heater 6-gallon electronic ignition w/motoraid & auto heater, Water Pump demand, Water System Winterization Package water heater bypass valve, siphon tube	S	S	S	S	S
Washer/Dryer Combination (requires 10-gallon water heater), NA w/king bed on 35L			0	0	0
Washer/Dryer Prep NA w/king bed on 35L			S	S	S
Water Heater 10-gallon electronic ignition, 120 VAC/LP gas w/motoraid & auto heater	0	0	0	0	0

SAFETY	32H	33V	35A	35L	38J
Assist Bar interior, Assist Handle exterior, Bumpers front & rear, Child Seat Tether Anchor (NA on 38J) , Detectors/Alarms LP leak, smoke, carbon monoxide, Fire Extinguisher 10 BC, Fog Lamps , Ground Fault Interrupter , Lights high-mount brakelamps, Light courtesy, Lights daytime running lamps, Seat Belts 3-point, adjustable, Window escape, Windshield laminated safety glass	S	S	S	S	S

WARRANTY ⁸	32H	33V	35A	35L	38J
12-month/15,000-mile basic warranty⁹	S	S	S	S	S
36-month/36,000-mile limited warranty on structure⁹ , 10-year limited parts & labor warranty on roof skin⁹					

- The height of each model is measured to the top of the tallest standard feature and is based on the curb weight of a typically equipped unit. The actual height of your vehicle may vary by several inches depending on chassis or equipment variations. Please contact your dealer for further information.
- Voyage floorplans feature a wide-body design – over 96" In making your purchase decision, you should be aware that some states restrict access on some or all state roads to 96" in body width. Before making your purchase decision, you should confirm the road usage laws in the states of interest to you.
- The load capacity of your motor home is designated by weight, not by volume, so you cannot necessarily use all available space when loading your motor home.
- Capacities are based on measurements prior to tank installation. Slight capacity variations can result due to installation applications.
- Capacities shown are tank manufacturer's listed water capacity (W.C.). Actual filled LP capacity is 80% of listing due to overfilling prevention device on tank.
- Measurements are based on the most recent information available. See your dealer for specifications.
- Actual towing capacity is dependent on your particular loading and towing circumstances which includes the GVWR, GAWR, and GCWR as well as adequate trailer brakes. Please refer to the Operator's Manual of your vehicle for further towing information.
- See separate chassis warranty.
- See your dealer for complete warranty information.

NA Not Available

S Standard

0 Optional

Not all items available in combination. See dealer for details.

Winnebago Industries® continuing program of product improvement makes specifications, equipment, model availability, and prices subject to change without notice. Comparisons to other motor homes are based on the most recent information available.

STANDARD GRAPHICS PACKAGE



Sandstone Beige Metallic



Dark Titanium Metallic

AVAILABLE FULL-BODY PAINT



Cool Spring



Spice



Polished Pewter

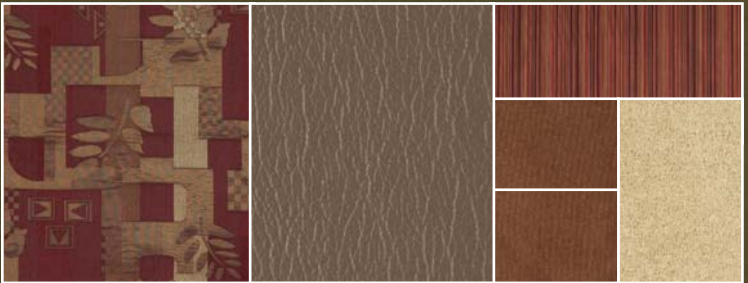
INTERIOR DECOR

Choose from three fabric selections and two cabinet wood choices.

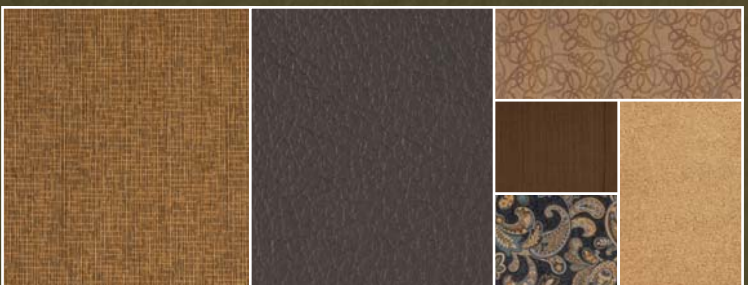
MAIN	ULTRA-LEATHER	BEDSPREAD	
		ACCENT	CARPET
		ACCENT	



Driftscape w/available Papyrus UltraLeather™



Mulberry w/available Pine Cone UltraLeather



Kingston w/available Truffle UltraLeather



Washed Maple



Sierra Maple

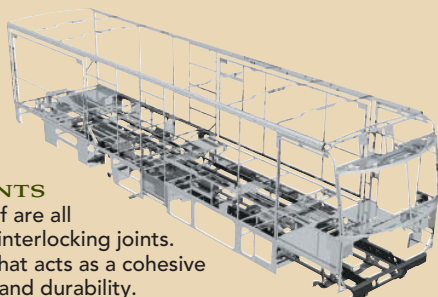


**BUILT BY WINNEBAGO INDUSTRIES.
BUILT TO LAST.**

Winnebago motor homes are built by Winnebago Industries, the company that defined motor homes. The company that built its reputation on quality construction. The company that transformed the motor home concept into a way of life.

Today, Winnebago Industries brings that reputation for quality and its 49-year history of motor home innovation to the design and construction of every motor home. It's all a part of SuperStructure®, our exclusive system of proprietary structural components that instills each motor home with improved strength and durability.

SOLID FOUNDATION Steel and aluminum truss work provides a solid, flat foundation for the floor and sidewalls. Winnebago Industries engineers also take special care to distribute the weight of components to ensure proper handling and stability.



INTERLOCKING JOINTS

The floor, sidewalls and roof are all integrally connected using interlocking joints. This creates a coach body that acts as a cohesive unit for improved strength and durability.

E-COATING Winnebago Industries employs an exclusive 12-stage automotive-style dip tank process to apply an advanced electrodeposition coating on critical steel components for superior corrosion protection.



WEB

THERMO-PANEL® SIDEWALLS Invented by Winnebago Industries, Thermo-Panel construction combines a fiberglass panel, high-density, block-foam insulation and aluminum support structures to create some of the most durable, lightweight sidewalls in the industry.

ATTENTION TO DETAIL Whether it's sending every coach through a high pressure water tunnel to check for leaks or labeling each individual wire and bar-coding parts to save time and frustration during service, Winnebago Industries considers every detail to ensure your Winnebago motor home provides you with years of pleasure.

STRONG AS STEEL Appliances are secured directly to embedded steel plates for added safety. Windshields are also mounted in steel with an automotive-style sealant; lesser designs use a rubber gasket to mount the windshield in fiberglass.



1-year-old Winnebago fiberglass roof



1-year-old competitor's rubber roof

FIBERGLASS ROOF The Voyage features a crowned, one-piece fiberglass roof, backed with a 10-year limited parts-and-labor roof skin warranty. Fiberglass offers superior strength, attractiveness and durability over the rubber roofs found on many competitive models which can chalk, streak and degrade over time. Fiberglass also provides increased puncture and tear resistance.



TAKE A TOUR We're proud of our process, state-of-the-art facilities and the people who make Winnebago Industries number one. We invite you to visit our factory in Forest City, Iowa, for a first-hand look at the dedication and technology behind every motor home we build.



RECOGNIZED QUALITY The Recreation Vehicle Dealer Association annually rates RV manufacturers and awards the Quality Circle award to manufacturers who provide exceptional products, service and support. Winnebago Industries is proud to be the only manufacturer to receive this award every year since its inception.



COMMITTED TO SERVICE We back our motor homes with the industry's best service after the sale.

- 12-month/15,000-mile basic limited warranty
- 36-month/36,000-mile warranty on structure
- Standard 10-year limited parts-and-labor roof skin warranty
- Complimentary 24-hour roadside assistance program
 - RV Technical Assistance Hotline
 - RV Service Appointment Assistance
 - Emergency Trip Interruption
 - Emergency Message Service
 - Nationwide Trip Routing
 - Fee-Free Travelers Cheques
- TripSaver Fast Track Parts. TripSaver guarantees that in-stock warranty parts ship directly to your dealer within 24 hours.
- National dealer service network



WIT CLUB Winnebago owners are like family. Joining the Winnebago-Itasca Travelers is a great way to meet and travel with other Winnebago enthusiasts.

Members enjoy:

- Caravans and rallies
- Local and state group activities
- RV travel benefits



WINNEBAGOIND.COM
Visit us on the web for more info on all of our motor homes, the latest product updates and a host of web-exclusive content.

For Sales and Service Information Contact:

Built proudly by



NYSE listing: WGO

©2007 Winnebago Industries, Inc.

Printed in USA

Seat belts are your most important hookup. Always buckle up.